



Birdies Bulletin

[Signature]



April/May
2010

MARTON LADIES GOLF CLUB.

Noelines Natter

Welcome to the 2010 Golf Season and to our new members and to those who have returned after a break from golf. It is hard to believe we are already into April and our competitions are well underway.

Our Pennants teams have started well. All had wins in March, Well done!

Thanks to all who supported our trading table which was a great success. What a lovely selection of produce, pickles, jams, cakes etc. This is a great way to help our funds. Thanks also to Faye who was in charge.

The 18 holers hosted a very enjoyable day with the 9 holers, lots of fun and enjoyment for all involved. The food table was very generously provided for and no one would have gone hungry. We had many comments about the 'Great Day'. My arm is improving so hope to be back to 18 holes before too long.

Good golfing to you all.

Noeline.

Rules of Golf2008-2011

Over the last month there has been some confusion over several rules, examples being:

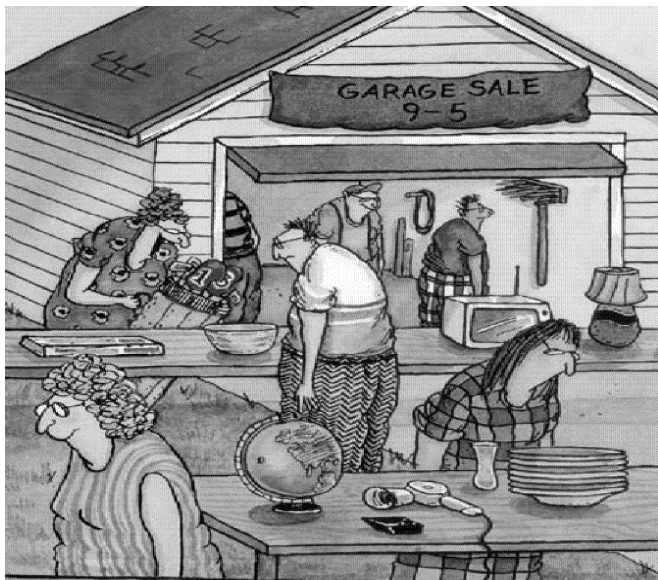
- Placing ball in rough !.....A No No. penalty applies See rule No 13. 'Ball Played as it lies' & Rule No. 20. 'Lifting, Dropping & Placing, & Playing from Wrong Place'.
- Definition of Teeing ground....The Teeing ground is the starting place for the hole to be played. It is a rectangular area two club lengths in depth, the front and the sides of which are defined by the outside limits of two tee-markers. A ball is outside the teeing ground when all of it lies outside the teeing ground. See rule 11-2. for the **1st** shot off the tee the Tee markers are deemed to be fixed and are not moveable. Tee markers may be removed to assist in subsequent shots. See moveable obstructions Rule 24.
- Worm Casts on or around putting surface.....Definitions of 'Loose impediments', Rule No.23. Loose impediments are natural objects, e.g. stones, leaves branches & the like, dung & worms, insects and the like, and the casts and heaps made by them provided they are not: fixed or growing, solidly embedded or adhering to the ball.. Sand and loose soil are loose impediments on the putting green but not elsewhere.

When referring to the rule book be aware that there may be cross-referencing on certain rules.

It is recommended that players keep up to date with the rules.



In Golf as in Life it is the Follow Through
That Makes The Difference



"Pssst! Help me play a little prank on my husband. Start walking away with these while loudly exclaiming that you can't believe you got a new set of graphite clubs for \$10."

M. FREEDON

Just Some of our
Sponsors

*

- Marton Print
- Go Ahead Hair Designs
- PGG Wrightsons
- Colour Plus
- Cooks Bar
- T.J. McIlwaine
- Hogan Plumbing
- Shell Marton
- P.J. Rayner Decorating
Ltd

*Please support our
sponsors where possible.*

Bits & Pieces.

~

Wanted for future publications, jokes, stories or anything of interest. Contact Claire on

327-8809.

If you have anything to Buy or Sell, from garden plants to broken putters or even husbands!!
Get in touch.



~

Golfers Prayer

Now I lay me down to sleep,
I pray the lord this dream to keep.
May I step upon the tee,
And hit the ball like pros I see,
Pars & Eagles, Birdies too,
Putts that roll both straight & true.
Should this you grant before I wake,
Don' let me die for goodness sake!

Contributed by Beryl Higgin. 10 years ago.

~

Rainy Days.

If the weather is wet, play will be delayed for up to 1 hour and then re-viewed. If 6 or more players want to proceed then the competition stands other wise it will be postponed until the following week.

~

Bryers Cup.

Don't forget we need 8 players.
If you are interested please put your name on the list.
To be played Sunday 30th May
12 noon at Hawkstone.

~

Lists up for:

- Bryers Cup
- Gaisford Cup
- Marton Open Day

~

Cheryl has spare copies of the Club Fixture Books..

Could all members who need to contact Cheryl please phone between 5 and 7 pm where possible.
Thank you.

Programme reminder

May

- Sun 2nd.....Championship Pennants.....Manawatu.
- Mon 3rd.....Vets.....Manawatu.
- Wed 5th.....LGU Medal & Putting, 2nd qualifying round Club Championships.
- Sat 8th.....Broadway Colour Plus 4'somes, choose own partners, 27 holes.
- Mon 10th.....District Pennants.....Feilding.
- Wed 12thPar Cup
- Thu 13th.....'Carpet One' Open day.....Palmerston North
- Fri 14th.....Open Day.....Rangatira
- Mon 17th.....Silver Pennants.....Wanganui
- Wed 19th.....Stableford Cup / Frae-Ona Cup (h/cp 28-40)
- Fri. 21st.....Open Day.....Marton.
- Mon 24th.....Open Day.....Foxton
- Wed 26th.....LGU Medal, 3rd Qualifying round Club Championships

June

- Wed 2nd.....LGU Medal & Putting, 4th Qualifying round Club Championships
- Thu 3rd..... .Open Day.....Manawatu
- Sat 5th.....Queens B'Day Tournament 54 Hole Pairs @ Marton (2 days)
- Sun 6th..... " " " Sunday evening social.
- Wed 9th.....Rangatira Visit @ Marton
- Sun 13th.....Championship Pennants.....Palmerston North
- Mon 14th.....Vets.....Rangatira
- Wed 16th.....Stableford Cup / Frae-Ona Cup (h/cp 28-40)
- Fri 18th.....Xmas Cheer— Denbigh Cup..Feilding
- Mon 21st.....District Pennants.....Levin
- Wed 23rd.....Par Cup
- Fri 25th.....Scotch Foursomes.....Castlecliff
- Sun 27th.....Combined Services Tournament
- Wed 30th.....Spare Day

Who is doing what.....Results.....

Nancy McCormick Winners— Jenny Ritchie / Faye Pedley Nett.....141

District Pennants— against Manawatu—3/2 win... Lying in 2nd place against Rangitstone by only 1/2 a point

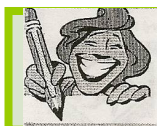
Silver Pennants _ 7-2 win, coming 1st in division.

Marton Team to play at Levin Friday 30th April for the Nationals—

Eleanor Bowler, Erica Clark, Di Gilmour & Sue Marshall... Good luck to you all

Out & about— hear tell that our girls are going very well not least Pat McVerry at the 2 day

Premier Challenge at Rangatira & Feilding with 92 points..... Congratulations



Your Position in the Field is Behind the 4 in Front
Not in Front of the 4 Behind.